



ДПТУ БРАКО ДОО  
 Раштански пат Бр. 2  
 Велес  
 Р. Северна Македонија

Тел: +389 43 212 560; жичано: 043 551 111  
 Факс: +389 43 232 534  
 www.brako.com.mk; sales@brako.com.mk  
 с-ка: 210-057898850188 НЛБ Тутунска Банка  
 с-ка: 300-270000030626 Комерцијална Банка  
 ЕДБ: МК4004003114759 М.Б:5789885

КУПУВАЧ:

Датум 26.02.2021  
 Датум на промет 26.02.2021  
 Рок на плаќање 30 денови  
 Датум на валута 28.03.2021

МИНИСТЕРСТВО ЗА ТРУД И СОЦИЈАЛНА ПОЛИТИКА НА  
 РЕПУБЛИКА СЕВЕРНА МАКЕДОНИЈА  
 (ПРОЕКТ ЗА ИТНО СПРАВУВАЊЕ СО КОВИД КРИЗАТА)  
 УЛ. ДАМЕ ГРУЕВ БР.14  
 МК-1000 СКОПЈЕ ЕДБ: 4030990252999

Фактура 21-390-000076



Испратница: 21-350-000093/26.2.2021

€ 11,545,483,00

Вкупно книжени обврски: 12.862.664,00 MKD

Вкупно доспеани обврски: 1.098.752,00 MKD

| Р.Б | Шифра     | Назив   | Количина  | ЕМ  | Цена без ДДВ | Р. % | ДДВ % | Износ        |
|-----|-----------|---|-----------|-----|--------------|------|-------|--------------|
| 1   | ЛИЦ-К-Т1  | Производство, транспорт и монтажа на модуларен префабрикован контејнер Тип 1  | ✓ 1,000   | ПАР | ✓ 439.995,60 | 0,00 | 18,00 | 439.995,60   |
| 2   | ЛИЦ-К-Т2  | Производство, транспорт и монтажа на модуларен префабрикован контејнер Тип 2  | ✓ 1,000   | ПАР | ✓ 219.997,80 | 0,00 | 18,00 | 219.997,80   |
| 3   | ЛИЦ-К-Т3  | Производство, транспорт и монтажа на модуларен префабрикован контејнер Тип 3  | ✓ 1,000   | ПАР | ✓ 691.132,70 | 0,00 | 18,00 | 691.132,70   |
| 4   | ЛИЦ-К-Т4  | Производство, транспорт и монтажа на модуларен префабрикован контејнер Тип 4  | ✓ 2,000   | ПАР | ✓ 251.137,10 | 0,00 | 18,00 | 502.274,20   |
| 5   | ЛИЦ-К-Т5  | Производство, транспорт и монтажа на модуларен префабрикован контејнер Тип 5  | ✓ 1,000   | ПАР | ✓ 439.995,60 | 0,00 | 18,00 | 439.995,60   |
| 6   | ЛИЦ-К-Т6  | Производство, транспорт и монтажа на модуларен префабрикован контејнер Тип 6  | ✓ 1,000   | ПАР | ✓ 879.991,20 | 0,00 | 18,00 | 879.991,20   |
| 7   | ЛИЦ-К-Т13 | Производство, транспорт и монтажа на модуларен префабрикован контејнер Тип 13 | ✓ 1,000   | ПАР | ✓ 439.995,60 | 0,00 | 18,00 | 439.995,60   |
| 8   | ЛИЦ-К-КРК | Кровна конструкција за контејнери позиција 14                                 | ✓ 647,000 | m2  | ✓ 1.105,47   | 0,00 | 18,00 | 715.239,09   |
| 9   | ЛИЦ-К-Т7  | Производство, транспорт и монтажа на модуларен префабрикован контејнер Тип 7  | ✓ 1,000   | ПАР | ✓ 219.997,80 | 0,00 | 18,00 | 219.997,80   |
| 10  | ЛИЦ-К-Т8  | Производство, транспорт и монтажа на модуларен префабрикован контејнер Тип 8  | ✓ 3,000   | ПАР | ✓ 659.993,40 | 0,00 | 18,00 | 1.979.980,20 |
| 11  | ЛИЦ-К-Т9  | Производство, транспорт и монтажа на модуларен префабрикован контејнер Тип 9  | ✓ 2,000   | ПАР | ✓ 879.991,20 | 0,00 | 18,00 | 1.759.982,40 |
| 12  | ЛИЦ-К-Т10 | Производство, транспорт и монтажа на модуларен префабрикован контејнер Тип 10 | ✓ 2,000   | ПАР | ✓ 251.137,10 | 0,00 | 18,00 | 502.274,20   |
| 13  | ЛИЦ-К-Т11 | Производство, транспорт и монтажа на модуларен префабрикован контејнер Тип 11 | ✓ 1,000   | ПАР | ✓ 877.372,20 | 0,00 | 18,00 | 877.372,20   |
|     |           | Согласно анекс должина на ходник 24м  |           |     |              |      |       |              |
| 14  | ЛИЦ-К-Т12 | Производство, транспорт и монтажа на модуларен префабрикован контејнер Тип 12 | ✓ 1,000   | ПАР | ✓ 219.997,80 | 0,00 | 18,00 | 219.997,80   |
| 15  | УСЛУГА18  | Подготовка на терен позиција 15   | ✓ 374,500 | m2  | ✓ 2.625,44   | 0,00 | 18,00 | 983.226,16   |

согласно допис бр. 02-62 од 18.02.2021 од страна на изведувачот извршени се 50% од работите од позиција бр.15

Објект тип Ц  
 Локација Општина Струга  
 Број на договор 10-7378/2  
 Број на постапка МК/ЕРСР # 1.1.7  
 Амандман на договор бр. 1 на договор МК/ЕРСР # 1.1.7

РЕПУБЛИКА СЕВЕРНА МАКЕДОНИЈА  
 REPUBLIKA E MAQEDONISE SE VERIUT  
 Министерство за труд и социјална политика  
 Ministria e Punës dhe Politikës Sociale  
 СКОПЈЕ - ШКУР

|                                  |               |                    |                   |
|----------------------------------|---------------|--------------------|-------------------|
| Примено<br>Praneno               |               |                    |                   |
| 03-11-2021                       |               |                    |                   |
| Организација<br>Nj. Organizacija | Број<br>Nomer | Принтер<br>Shtepca | Вредност<br>Vlera |
| 05-5/2085                        |               |                    |                   |

1/2



ISO 14001  
 LL-C (Certification)

ALBERTA TELEPHONE COMPANY  
TELEPHONE SERVICE  
MONTREAL, QUEBEC  
1950





ДПУ БРАКО ДОО  
 Раштански пат Бр. 2  
 Велес  
 Р. Северна Македонија

Тел: +389 43 212 560; жичано: 043 551 111  
 Факс: + 389 43 232 534  
 www.brako.com.mk; sales@brako.com.mk  
 с-ка: 210-057898850188 НЛБ Тутунска Банка  
 с-ка: 300-270000030626 Комерцијална Банка  
 ЕДБ: МК4004003114759 М.Б:5789885

КУПУВАЧ:

Датум 26.02.2021  
 Датум на промет 26.02.2021  
 Рок на плаќање 30 денови  
 Датум на валута 28.03.2021

МИНИСТЕРСТВО ЗА ТРУД И СОЦИЈАЛНА ПОЛИТИКА НА  
 РЕПУБЛИКА СЕВЕРНА МАКЕДОНИЈА  
 (ПРОЕКТ ЗА ИТНО СПРАВУВАЊЕ СО КОВИД КРИЗАТА)  
 УЛ. ДАМЕ ГРУЕВ БР.14  
 МК-1000 СКОПЈЕ ЕДБ: 4030990252999

**Фактура 21-390-000076**



Испратница: 21-350-000093/26.2.2021

Вкупно книжени обврски: 12.862.664,00 MKD

Вкупно доспеани обврски: 1.098.752,00 MKD

|            |  |                     |               |     |              |          |               |
|------------|--|---------------------|---------------|-----|--------------|----------|---------------|
| Со зборови | дванаесет милиони осумстотини дваесет и осум илјади триста четиринаесет MKD 00/100 | Основна             | 10.871.452,55 | ДДВ | 1.956.861,46 | Вредност | 12.828.314,01 |
|            |  | Израмнување на дени |               |     |              |          | -0,01         |
|            |  | Вкупно              | МКД           |     |              |          | 12.828.314,00 |

| Рокот за исполнување на паричните обвр | Основа        | ДДВ          | Вредност      |
|--|---------------|--------------|---------------|
|  | 10.871.452,55 | 1.956.861,46 | 12.828.314,00 |

Платено 10% аванс  
 Вкупен износ на фактурата 12.828.314,00 MKD  
 Платен аванс (10%) = 1.282.831,40 MKD  
 Останува за уплата по ф/ра бр.21-390-000076 = 11.545482,60 MKD

Рокот за исполнување на паричните обврски започнува да тече од датумот на испратницата.  
 За ненавремено плаќање пресметуваме законска камата.  
 Во случај на девалвација се пресметува курсот на еврото на денот на наплатата.

При плаќање со налог за плаќање наведете во повикување 21-390-000076.

Фактурирал

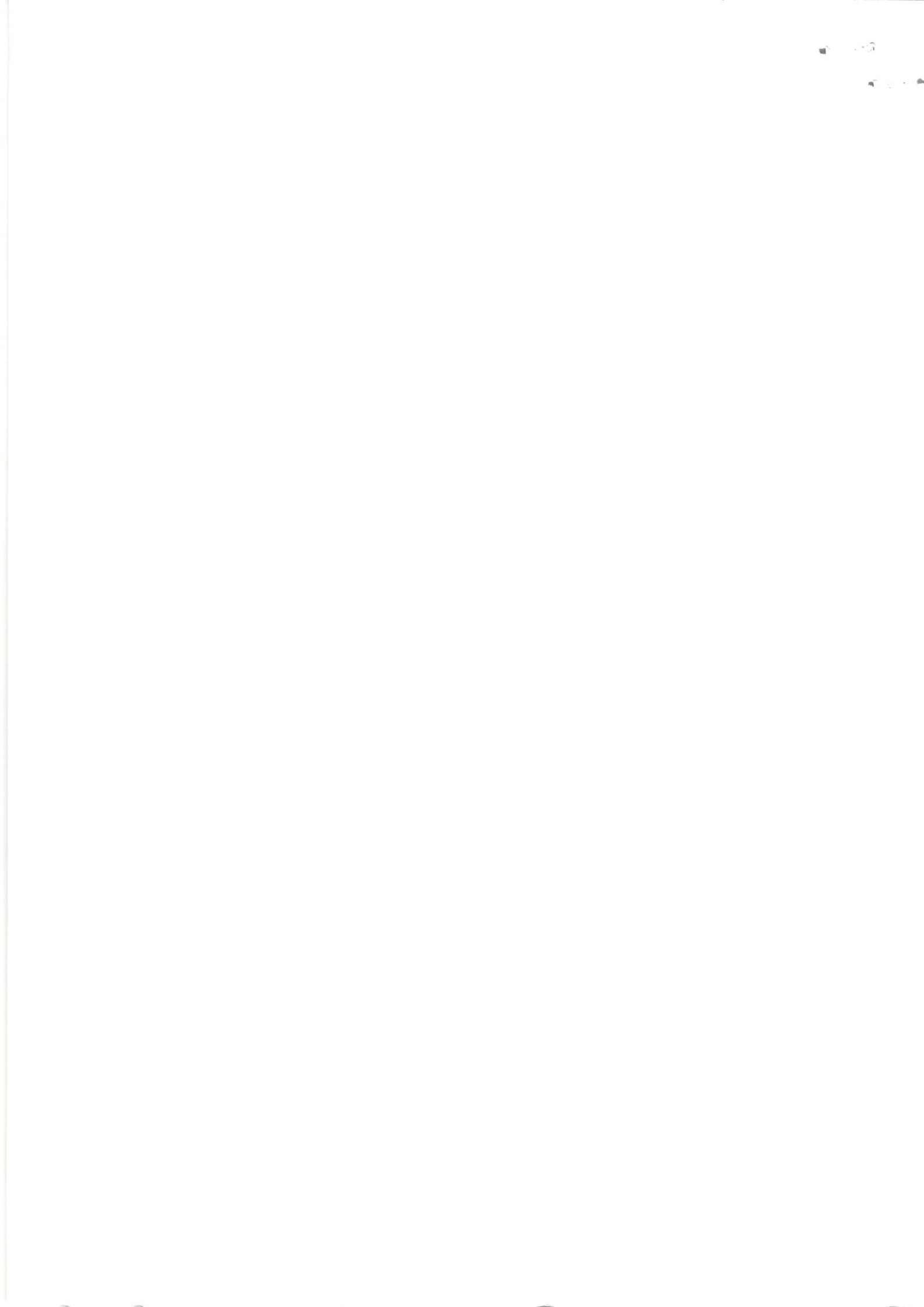


Овластено лице за потпишување  
 на фактурата:  
 Zoran Strahilov

ГАРАНТИРАМЕ ДЕКА ФАКТУРИРАНИТЕ КОЛИЧИНИ СЕ ВГРАДЕНИ  
 И УСТИТЕ СЕ НАПЛАТЕНИ ПО ЦЕНИ СОГЛАСНО ДОГОВОРОТ  
 Зоран Апостоловски  
 Антонио Трпачевски



ISO 14001  
 LL-C (Certification)





Company for production ,trade and services BRAKO DOO (Limited Liability Company) import-export Veles,  
Str.Rashtanski pat no.2 1400 Veles, Republic of North Macedonia tel: +389 43 212 560 e-mail: [office@brako.com.mk](mailto:office@brako.com.mk)  
Drushtvo za Proizvodstvo, Trgovija i Uslugi BRAKO DOO uvoz-izvoz Veles ul.Rashtanski pat br.2 1400 Veles, Republika Severna  
Makedonija tel: +389 43 212 560 e-mail: [office@brako.com.mk](mailto:office@brako.com.mk)

TO

Ministry of Labour and Social Policy of the Republic of North Macedonia

Procurement of the modular prefabricated container

RFB No: MK/ERCP # 1.1.7

**Warranty certificate**

For location Struga according invoice no. 21-390-000076

We give warranty certificate in accordance with GCC 28.3 from special condition of the contract:

|                 |  |
|-----------------|--|
| <b>GCC 28.3</b> | <p>The period of validity of the Warranty of the goods shall be 2 years from the date of the letter of acceptance</p> <p>For purposes of the Warranty, the places of final destinations shall be:<br/>As given in the Table 1 "List of Goods and Delivery Schedule", of the "Schedule of Requirements"</p> <p>During the warranty period the on site (project sites) response time will be within 24 hours and the period for correction of defects in the warranty period is 72 hours upon the written notification by the Purchaser to the Supplier.</p> |
|-----------------|--|

DPTU BRAKO DOO

Aleksandar Naumov – Project manager






Српска Единица  
Примерок

Република Северна Македонија

**Министерство за труд  
и социјална политика**

**Архивски број:**

**Датум:**

**Предмет:** Записник од примо-предавање  
на префабрикувани модулари контејнери - Регионални ковид центри  
- Договор бр. МК/ЕРСР # 1.1.7, од 30.11.2020 година, спроведен од  
страна на Министерството за труд и социјална политика

**Објект:** ЈЗУ Општа болница Струга

**Локација:** Општина Струга

**Датум на извршено примо-предавање:** 26.01.2021 год.

**Присутни:** Комисија формирана со Решение бр. 10-5296/1 од 28.12.2020 год. во состав:  
-Митко Танески, Министерство за здравство;  
-Божин Ложанкоски, Министерство за здравство;  
-Зоран Апостолоски, Министерство за труд и социјална политика;  
-Антонио Тргачевски, Министерство за труд и социјална политика;  
**Претставници на носителот на набавка на опремата-набавувачот „заедничко  
вложување ДПТУ БРАКО ДОО Велес и ЈБТ-Ари и Том ДООЕЛ Валандово“:**

**Претставник на ЈЗУ Општа болница Струга:**

**Тип В:** Дополнителен капацитет за прием, тријажа, тествање и сместување на пациенти во болнички  
стационар со капацитет од 33-35 болнички легла

Модуларната болница од префабрикувани елементи – контејнери тип В е изведена согласно договорот за  
изведба бр. МК/ЕРСР # 1.1.7 со вкупна површина од 590 метри квадратни. Истата е изведена согласно  
спецификацијата во договор за модулари болници тип В со сите потребни вградени елементи опишани  
по просториите од од 1 до 13 подолу во спецификацијата:



Република Северна Македонија

Министерство за труд  
и социјална политика

| <b>Construction, transport and montage of modular prefabricated containers for Regional Covid Triage, Laboratory and Stationary Center with outpatients and inpatients units</b> |   | <b>Type C</b> |
|--|---|---------------|
|  |   | <b>In psc</b> |
| 1.   | <p><b>Type 1</b> – Construction, transport and montage of modular prefabricated containers – (entrance for patients and reception desk) – “turn key” project; dimensions: 6000 mm length, 4800 mm width and 2600 mm height (external dimension) or „equivalent “.</p> <p>The containers shall have the following equipment:</p> <p>Construction:</p> <ul style="list-style-type: none"><li>- Structural steel dimensioning according to static calculation;</li><li>- Anticorrosive iron steel, epoxy coated with 4 layers of paint, constructive S 235JR or „equivalent “, conformed to MKC EN10025-2:2009;</li><li>- Steel construction depth, minimum 3mm;</li></ul> <p>Fabricated of:</p> <ul style="list-style-type: none"><li>- Ecological wall panels (PUR) minimum 60mm, which save heat, sound isolation included, covered with exterior and interior facade. Interior depth of plasticized stake, minimum 0,4mm, exterior minimum 0,4mm, polyurethane weight, minimum 42 kg/m<sup>3</sup>, thermal conductivity, maximum: 0,43 U(W/m<sup>2</sup>K) RAL 9002/9002;</li></ul> <p>1. Floor:</p> <ul style="list-style-type: none"><li>- Cement table 10mm with amortization, connecting the steel beam</li><li>- Thermal isolation 10 cm, extruded polystyrene;</li><li>- Steel beam dimensions: 100 mm x 40 mm x 3 mm; 100 mm x 20 mm x 3 mm; 80 mm x 50 mm x 3 mm; 50 mm-4 0mm-3mm, structural steel dimensioning according to static calculation</li><li>- Cement table 20mm</li><li>- OSB boards;</li><li>- Homogeneous Vinyl PVC Flooring, minimum 2mm, strengthened with pur xr protection, exploited class 34/43, min. 3000gr/m<sup>2</sup>, abrasive group 4.00mm<sup>3</sup>, suitable for wheelchairs, fire resistant, electrostatic, antibacterial, chemicals and sliding conformed to: EN13501, ISO26987-EN423, ISO846. Glued and welded with electrodes, cove former profile, radius 25mm, height 10 cm, depth 2mm.</li></ul> <p>Ceiling:</p> <ul style="list-style-type: none"><li>- Ecological wall panels (PUR) minimum 60mm, which save heat, sound isolation included, covered with exterior and interior facade. Interior</li></ul> | 1             |





Република Северна Македонија

**Министерство за труд  
и социјална политика**

|    |   |   |
|----|---|---|
|    | <p>depth of plasticized stake, minimum 0,4mm exterior minimum 0,4mm, polyurethane weight, minimum 42 kg/m<sup>3</sup>, thermal conductivity, maximum 0,43 U(W/m<sup>2</sup>K) RAL 9002/9002</p> <p>Carpentry:</p> <ul style="list-style-type: none"><li>- PVC – single-leaf double hung window, with insulated glass, dimensions 80/120 cm and parapet at height of 90cm, interior venetian blinds and mating 50% of glass surface with foil, exterior mosquito net. The number of elements and their positioning should be in accordance with the drawings attached herein.</li><li>- PVC – double-leaf door – 180/210cm with 50% filled panel and 50% mating glass 4x16x4 set with: shackle, door knob, lock and floor border and rooms numbering, dimensions 12/24 cm. The number of elements and their positioning should be in accordance with the drawings attached herein.</li></ul> <p>Cooling and heating system:</p> <ul style="list-style-type: none"><li>- Air conditioning inverter system – minimum 3,5 KW</li></ul> <p>Electrical installation:</p> <ul style="list-style-type: none"><li>- 6 LED lights x 18w;</li><li>- 1 electrical switch;</li><li>- minimum 6 single-phase upgraded power outlet;</li><li>- 1 single-phase upgraded power outlet– air conditioner;</li><li>- 1 PVC wall switchboard with minimum 3 automatic fuses;</li><li>- 1 Input IP board;</li></ul> |   |
| 2. | <p><b>Type 2</b> – Construction, transport and montage of modular prefabricated containers (reception/administration) – “turn key” project; dimensions: 2400 mm length, 6000 mm width and 2600 mm height (external dimension) or „equivalent “.</p> <p>The containers shall have the following equipment:</p> <ul style="list-style-type: none"><li>- Structural steel dimensioning according to static calculation;</li><li>- Anticorrosive iron steel, epoxy coated with 4 layers of paint, constructive S 235JR or „equivalent “, conformed to MKC EN10025-2:2009;</li><li>- Steel construction depth, minimum 3mm;</li></ul> <p>Fabricated of:</p> <ul style="list-style-type: none"><li>- Ecological wall panels (PUR) minimum 60mm, which save heat, sound isolation included, covered with exterior and interior facade. Interior depth of plasticized stake, minimum 0,4mm, exterior minimum 0,4mm, polyurethane weight, minimum 42 kg/m<sup>3</sup>, thermal conductivity, maximum: 0,43 U(W/m<sup>2</sup>K) RAL 9002/9002;</li></ul> <p>Floor:</p> <ul style="list-style-type: none"><li>- Cement table 10mm with amortization, connecting the steel beam</li></ul>   | 1 |



Република Северна Македонија

**Министерство за труд  
и социјална политика**

|    |  |          |
|----|--|----------|
|    | <ul style="list-style-type: none"><li>- Thermal isolation 10 cm, extruded polystyrene;</li><li>- Steel beam dimensions: 100 mm x 40 mm x 3 mm; 100 mm x 20 mm x 3 mm; 80 mm x 50 mm x 3 mm; 50 mm-40 mm-3mm, structural steel dimensioning according to static calculation</li><li>- Cement table 20mm</li><li>- OSB boards;</li><li>- Homogeneous Vinyl PVC Flooring, minimum 2mm, strengthened with pure protection, exploited class 34/43, min. 3000gr/m<sup>2</sup>, abrasive group 4.00mm<sup>3</sup>, suitable for wheelchairs, fire resistant, electrostatic, antibacterial, chemicals and sliding conformed to: EN13501, ISO26987-EN423, ISO846. Glued and welded with electrodes, cove former profile, radius 25mm, height 10 cm, depth 2mm.</li></ul> <p>Ceiling:</p> <ul style="list-style-type: none"><li>- Ecological wall panels (PUR) minimum 60mm, which save heat, sound isolation included, covered with exterior and interior facade. Interior depth of plasticized stake, minimum 0,4mm exterior minimum 0,4mm, polyurethane weight, minimum 42 kg/m<sup>3</sup>, thermal conductivity, maximum 0,43 U(W/m<sup>2</sup>K) RAL 9002/9002.</li></ul> <p>Carpentry:</p> <ul style="list-style-type: none"><li>- PVC – single-leaf double hung window, with insulated glass, dimensions 80/100 cm and parapet at height of 90cm, interior venetian blinds and mating 50% of glass surface with foil, exterior mosquito net. The number of elements and their positioning should be in accordance with the drawings attached herein.</li><li>- PVC – single-leaf interior door – 120/210cm with 50 % filled panel and 50% mating glass 4x16x4 set with: shackle, door knob, lock and floor border and rooms numbering, dimensions 12/24 cm. The number of elements and their positioning should be in accordance with the drawings attached herein.</li><li>- Combined: PVC – sliding/single-leaf, pass through windows glass system, dimensions 100/100 cm (positioning in sole container), with parapet desks minimum 30cm width on each side.</li></ul> <p>Cooling and heating system:</p> <ul style="list-style-type: none"><li>- Air conditioning inverter system, minimum 3,5 KW</li></ul> <p>Electrical installation:</p> <ul style="list-style-type: none"><li>- 3 LED lights x 18w;</li><li>- 1 electrical switch;</li><li>- minimum 6 single-phase upgraded power outlet;</li><li>- 1 single-phase upgraded power outlet – air conditioner;</li><li>- 1 PVC wall switchboard with minimum 3 automatic fuses;</li><li>- 1 Input IP board;</li></ul> |          |
| 3. | <b>Type 3 – Construction, transport and montage of modular prefabricated containers – (P2 lab, preparing area, biosafety cabinet, tampon zone, toilet and</b>  | <b>1</b> |

4



Република Северна Македонија

**Министерство за труд  
и социјална политика**

wardrobe) – turn key” project; dimensions: 6000 mm length, 7200 mm width and 2600 mm height (external dimension) or „equivalent “.

The containers shall have the following equipment:

- Structural steel dimensioning according to static calculation;
- Anticorrosive iron steel, epoxy coated with 4 layers of paint, constructive S 235JR or „equivalent “, conformed to MKC EN10025-2:2009;
- Steel construction depth, minimum 3mm;

Fabricated of:

- Ecological wall panels (PUR) minimum 60mm, which save heat, sound isolation included, covered with exterior and interior facade. Interior depth of plasticized stake, minimum 0,4mm, exterior minimum 0,4mm, polyurethane weight, minimum 42 kg/m<sup>3</sup>, thermal conductivity, maximum: 0,43 U(W/m<sup>2</sup>K) RAL 9002/9002;

Floor:

- Cement table 10mm with amortization, connecting the steel beam
- Thermal isolation 10 cm, extruded polystyrene;
- Steel beam dimensions: 100 mm x 40 mm x 3 mm; 100 mm x 20 mm x 3 mm; 80 mm x 50 mm x 3 mm; 50 mm-4 0mm-3mm, structural steel dimensioning according to static calculation
- Cement table 20mm
- OSB boards;
- Homogeneous Vinyl PVC Flooring, minimum 2mm, strengthened with pur xr protection, exploited class 34/43, min. 3000gr/m<sup>2</sup>, abrasive group 4.00mm<sup>3</sup>, suitable for wheelchairs, fire resistant, electrostatic, antibacterial, chemicals and sliding conformed to: EN13501, ISO26987-EN423, ISO846. Glued and welded with electrodes, cove former profile, radius 25mm, height 10 cm, depth 2mm.

Ceiling:

- Ecological wall panels (PUR) minimum 60mm, which save heat, sound isolation included, covered with exterior and interior facade. Interior depth of plasticized stake, minimum 0,4mm exterior minimum 0,4mm, polyurethane weight, minimum 42 kg/m<sup>3</sup>, thermal conductivity, maximum 0,43 U(W/m<sup>2</sup>K) RAL 9002/9002

Carpentry:

- PVC – single-leaf double hung window, with insulated glass, dimensions 80/100 cm and parapet at height of 90cm, interior venetian blinds and mating 50% of glass surface with foil, exterior mosquito net. The number of elements and their positioning should be in accordance with the drawings attached herein.
- PVC – single-leaf double hung window, with insulated glass, dimensions 60/60cm and parapet at height of 150cm. The number of elements and their positioning should be in accordance with the drawings attached herein.



Република Северна Македонија

**Министерство за труд  
и социјална политика**

|   |   |   |
|---|---|---|
|   | <ul style="list-style-type: none"><li>- PVC – single-leaf interior door 105/210cm with 50% filled panel and 50% mating glass 4x16x4 set with: shackle, door knob, lock and floor border and rooms numbering, dimensions 12/24 cm. The number of elements and their positioning should be in accordance with the drawings attached herein.</li><li>- Combined: PVC – sliding/single-leaf, pass through windows glass system, dimensions 100/100 cm (positioning in sole container), with parapet desks minimum 30cm width on each side. The number of elements and their positioning should be in accordance with the drawings attached herein.</li></ul> <p>Cooling and heating system:</p> <ul style="list-style-type: none"><li>- Air conditioning inverter system – minimum 3,5 KW. The number of elements and their positioning should be in accordance with the drawings attached herein.</li></ul> <p>Installations:</p> <p>Water supply and sanitation:</p> <ul style="list-style-type: none"><li>- The number of elements and their positioning, including full installation of water supply and sanitation (ex. Single-lever battery tap, toilet bowl with flush, 50-liter hot water boiler etc), should be in accordance with the drawings attached herein.</li></ul> <p>Electrical installation:</p> <ul style="list-style-type: none"><li>- 10 LED lights x 18w;</li><li>- electrical switch - The number of elements and their positioning should be in accordance with the drawings attached herein.</li><li>- Minimum 12 single-phase upgraded power outlet;</li><li>- single-phase upgraded power outlet – air conditioner</li><li>- 1 PVC wall switchboard with minimum 6 automatic fuses;</li><li>- 1 Input IP board;</li></ul> |   |
| 6 | <p><b>Type 4</b> – Construction, transport and montage of modular prefabricated containers – (men/women toilets with wardrobe – toilet and shower) – “turn key” project; dimensions: 2400mm length, 6000 mm width and 2600 mm height (external dimension) or „equivalent “.</p> <p>The containers shall have the following equipment:</p> <ul style="list-style-type: none"><li>- Structural steel dimensioning according to static calculation;</li><li>- Anticorrosive iron steel, epoxy coated with 4 layers of paint, constructive S 235JR or „equivalent “, conformed to MKC EN10025-2:2009;</li><li>- Steel construction depth, minimum 3mm;</li></ul> <p>Fabricated of:</p> <ul style="list-style-type: none"><li>- Ecological wall panels (PUR) minimum 60mm, which save heat, sound isolation included, covered with exterior and interior facade. Interior depth of plasticized stake, minimum 0,4mm, exterior minimum 0,4mm, polyurethane</li></ul>  | 2 |



Република Северна Македонија

**Министерство за труд  
и социјална политика**

weight, minimum 42 kg/m<sup>3</sup>, thermal conductivity, maximum: 0,43 U(W/m<sup>2</sup>K)  
RAL 9002/9002;

**Floor:**

- Cement table 10mm with amortization, connecting the steel beam
- Thermal isolation 10 cm, extruded polystyrene;
- Steel beam dimensions: 100 mm x 40 mm x 3 mm; 100 mm x 20 mm x 3 mm; 80 mm x 50 mm x 3 mm; 50 mm-40mm-3mm, structural steel dimensioning according to static calculation
- Cement table 20mm
- OSB boards;
- Homogeneous Vinyl PVC Flooring, minimum 2mm, strengthened with pur xr protection, exploited class 34/43, min. 3000gr/m<sup>2</sup>, abrasive group 4.00mm<sup>3</sup>, suitable for wheelchairs, fire resistant, electrostatic, antibacterial, chemicals and sliding conformed to: EN13501, ISO26987-EN423, ISO846. Glued and welded with electrodes, cove former profile, radius 25mm, height 10 cm, depth 2mm.

**Ceiling:**

- Ecological wall panels (PUR) minimum 60mm, which save heat, sound isolation included, covered with exterior and interior facade. Interior depth of plasticized stake, minimum 0,4mm exterior minimum 0,4mm, polyurethane weight, minimum 42 kg/m<sup>3</sup>, thermal conductivity, maximum 0,43 U(W/m<sup>2</sup>K)  
RAL 9002/9002.

**Carpentry:**

- PVC – single-leaf double hung window, with insulated glass, dimensions 60/60 cm and parapet at height of 150cm. The number of elements and their positioning should be in accordance with the drawings attached herein.
- PVC – single-leaf interior door – 105/210cm with 50 % filled panel and 50% mating glass 4x16x4 set with: shackle, door knob, lock and floor border and rooms numbering, dimensions 12/24 cm. The number of elements and their positioning should be in accordance with the drawings attached herein.

**Cooling and heating system:**

- Heating type – electrical panels.

**Installations:**

**Water supply and sanitation:**

- The number of elements and their positioning, including full installation of water supply and sanitation (ex. Single-lever battery tap, toilet bowl with flush, 50-liter hot water boiler etc), should be in accordance with the drawings attached herein.

**Electrical installation:**



Република Северна Македонија

**Министерство за труд  
и социјална политика**

|    |  |   |
|----|--|---|
|    | <ul style="list-style-type: none"><li>- 3 LED lights x 18w;</li><li>- 1 electrical switch;</li><li>- minimum 6 single-phase upgraded power outlet;</li><li>- 1 single-phase upgraded power outlet – air conditioner;</li><li>- 1 PVC wall switchboard with minimum 6 automatic fuses;</li><li>- 1 Input IP board;</li></ul>  |   |
| 5. | <p><b>Type 5</b> – Construction, transport and montage of modular prefabricated containers – (doctor’s office) – “turn key” project; dimensions: 4800 mm length, 6000 mm and 2600 mm height (external dimension) or „equivalent “.</p> <p>The containers shall have the following equipment:</p> <ul style="list-style-type: none"><li>- Structural steel dimensioning according to static calculation;</li><li>- Anticorrosive iron steel, epoxy coated with 4 layers of paint, constructive S 235JR or „equivalent “, conformed to MKC EN10025-2:2009;</li><li>- Steel construction depth, minimum 3mm;</li></ul> <p>Fabricated of:</p> <ul style="list-style-type: none"><li>- Ecological wall panels (PUR) minimum 60mm, which save heat, sound isolation included, covered with exterior and interior facade. Interior depth of plasticized stake, minimum 0,4mm, exterior minimum 0,4mm, polyurethane weight, minimum 42 kg/m<sup>3</sup>, thermal conductivity, maximum: 0,43 U(W/m<sup>2</sup>K) RAL 9002/9002;</li></ul> <p>Floor:</p> <ul style="list-style-type: none"><li>- Cement table 10mm with amortization, connecting the steel beam</li><li>- Thermal isolation 10 cm, extruded polystyrene;</li><li>- Steel beam dimensions: 100 mm x 40 mm x 3 mm; 100 mm x 20 mm x 3 mm; 80 mm x 50 mm x 3 mm; 50 mm-4 0mm-3mm, structural steel dimensioning according to static calculation</li><li>- Cement table 20mm</li><li>- OSB boards;</li><li>- Homogeneous Vinyl PVC Flooring, minimum 2mm, strengthened with pur xr protection, exploited class 34/43, min. 3000gr/m<sup>2</sup>, abrasive group 4.00mm<sup>3</sup>, suitable for wheelchairs, fire resistant, electrostatic, antibacterial, chemicals and sliding conformed to: EN13501, ISO26987-EN423, ISO846. Glued and welded with electrodes, cove former profile, radius 25mm, height 10 cm, depth 2mm.</li></ul> <p>Ceiling:</p> <ul style="list-style-type: none"><li>- Ecological wall panels (PUR) minimum 60mm, which save heat, sound isolation included, covered with exterior and interior facade. Interior depth of plasticized stake, minimum 0,4mm exterior minimum 0,4mm, polyurethane weight, minimum 42 kg/m<sup>3</sup>, thermal conductivity, maximum 0,43 U(W/m<sup>2</sup>K) RAL 9002/9002.</li></ul> | 1 |



Република Северна Македонија

**Министерство за труд  
и социјална политика**

|    |  |   |
|----|--|---|
|    | <p><b>Carpentry:</b></p> <ul style="list-style-type: none"><li>- PVC – single-leaf double hung window, with insulated glass, dimensions 80/100 cm and parapet at height of 90cm, and exterior mosquito net. The number of elements and their positioning should be in accordance with the drawings attached herein.</li><li>- PVC – single-leaf interior door – 105/210cm filled panel, set with: shackle, door knob, lock and floor border and rooms numbering, dimensions 12/24 cm. The number of elements and their positioning should be in accordance with the drawings attached herein.</li></ul> <p><b>Cooling and heating system:</b></p> <ul style="list-style-type: none"><li>- Air conditioning inverter system – minimum 3,5 KW. The number of elements and their positioning should be in accordance with the drawings attached herein.</li></ul> <p><b>Installations:</b></p> <p><b>Water supply and sanitation:</b></p> <ul style="list-style-type: none"><li>- 1 sink, full water supply and sanitation installation, battery tap;</li></ul> <p><b>Electrical installation:</b></p> <ul style="list-style-type: none"><li>- 6 LED lights x 18w;</li><li>- 1 electrical switch;</li><li>- minimum 6 single-phase upgraded power outlet;</li><li>- 1 single-phase upgraded power outlet – hot water boiler;</li><li>- 1 PVC wall switchboard with minimum 6 automatic fuses;</li><li>- 1 Input IP board;</li><li>-</li></ul> |   |
| 6. | <p><b>Type 6</b> – Construction, transport and montage of modular prefabricated containers – (triage office for interventions and X-ray) – “turn key” project; dimensions: 9600 mm length, 6000 mm width and 2600 mm height (external dimension) or „equivalent“.</p> <p>The containers shall have the following equipment:</p> <ul style="list-style-type: none"><li>- Structural steel dimensioning according to static calculation;</li><li>- Anticorrosive iron steel, epoxy coated with 4 layers of paint, constructive S 235JR or „equivalent “, conformed to MKC EN10025-2:2009;</li><li>- Steel construction depth, minimum 3mm;</li></ul> <p>Fabricated of:</p> <ul style="list-style-type: none"><li>- Ecological wall panels (PUR) minimum 60mm, which save heat, sound isolation included, covered with exterior and interior facade. Interior depth of plasticized stake, minimum 0,4mm, exterior minimum 0,4mm, polyurethane weight, minimum 42 kg/m<sup>3</sup>, thermal conductivity, maximum: 0,43 U(W/m<sup>2</sup>K) RAL 9002/9002;</li></ul>   | 1 |



Република Северна Македонија

**Министерство за труд  
и социјална политика**

**Floor:**

- Cement table 10mm with amortization, connecting the steel beam
- Thermal isolation 10 cm, extruded polystyrene;
- Steel beam dimensions: 100 mm x 40 mm x 3 mm; 100 mm x 20 mm x 3 mm; 80 mm x 50 mm x 3 mm; 50 mm-4 0mm-3mm, structural steel dimensioning according to static calculation
- Cement table 20mm
- OSB boards;
- Homogeneous Vinyl PVC Flooring, minimum 2mm, strengthened with pur xr protection, exploited class 34/43, min. 3000gr/m<sup>2</sup>, abrasive group 4.00mm<sup>3</sup>, suitable for wheelchairs, fire resistant, electrostatic, antibacterial, chemicals and sliding conformed to: EN13501, ISO26987-EN423, ISO846. Glued and welded with electrodes, cove former profile, radius 25mm, height 10 cm, depth 2mm.

**Ceiling:**

- Ecological wall panels (PUR) minimum 60mm, which save heat, sound isolation included, covered with exterior and interior facade. Interior depth of plasticized stake, minimum 0,4mm exterior minimum 0,4mm, polyurethane weight, minimum 42 kg/m<sup>3</sup>, thermal conductivity, maximum 0,43 U(W/m<sup>2</sup>K) RAL 9002/9002.

**Carpentry:**

- PVC – single-leaf double hung window, with insulated glass, dimensions 80/100 cm and parapet at height of 90cm, exterior mosquito net. The number of elements and their positioning should be in accordance with the drawings attached herein.
- PVC – single-leaf interior door – 120/210cm filled panel, set with: shackle, door knob, lock and floor border and rooms numbering, dimensions 12/24 cm. The number of elements and their positioning should be in accordance with the drawings attached herein.

**Cooling and heating system:**

- Air conditioning inverter system – minimum 3,5 KW. The number of elements and their positioning should be in accordance with the drawings attached herein.

**Installations:**

**Water supply and sanitation:**

- sinks, full water supply and sanitation installation, battery tap; The number of elements and their positioning should be in accordance with the drawings attached herein.

**Electrical installation:**

- 12 LED lights x 18w;





Република Северна Македонија

**Министерство за труд  
и социјална политика**

|    |   |   |
|----|---|---|
|    | <ul style="list-style-type: none"><li>- Electrical switch;</li><li>- single-phase upgraded power outlet;</li><li>- single-phase upgraded power outlet – air conditioner;</li><li>- PVC wall switchboard with automatic fuses; The number of elements and their positioning should be in accordance with the drawings attached herein.</li><li>- 1 Input IP board;</li></ul>   |   |
| 7. | <p><b>Type 7</b> – Construction, transport and montage of modular prefabricated containers – (isolation room) – “turn key” project; dimensions: 2400 mm length, 6000 mm width and 2600 mm height (external dimension) or „equivalent “.</p> <p>The containers shall have the following equipment:</p> <ul style="list-style-type: none"><li>- Structural steel dimensioning according to static calculation;</li><li>- Anticorrosive iron steel, epoxy coated with 4 layers of paint, constructive S 235JR or „equivalent “, conformed to MKC EN10025-2:2009;</li><li>- Steel construction depth, minimum 3mm;</li></ul> <p>Fabricated of:</p> <ul style="list-style-type: none"><li>- Ecological wall panels (PUR) minimum 60mm, which save heat, sound isolation included, covered with exterior and interior facade. Interior depth of plasticized stake, minimum 0,4mm, exterior minimum 0,4mm, polyurethane weight, minimum 42 kg/m<sup>3</sup>, thermal conductivity, maximum: 0,43 U(W/m<sup>2</sup>K) RAL 9002/9002;</li></ul> <p>Floor:</p> <ul style="list-style-type: none"><li>- Cement table 10mm with amortization, connecting the steel beam</li><li>- Thermal isolation 10 cm, extruded polystyrene;</li><li>- Steel beam dimensions: 100 mm x 40 mm x 3 mm; 100 mm x 20 mm x 3 mm; 80 mm x 50 mm x 3 mm; 50 mm-40mm-3mm, structural steel dimensioning according to static calculation</li><li>- Cement table 20mm</li><li>- OSB boards;</li><li>- Homogeneous Vinyl PVC Flooring, minimum 2mm, strengthened with pur xr protection, exploited class 34/43, min. 3000gr/m<sup>2</sup>, abrasive group 4.00mm<sup>3</sup>, suitable for wheelchairs, fire resistant, electrostatic, antibacterial, chemicals and sliding conformed to: EN13501, ISO26987-EN423, ISO846. Glued and welded with electrodes, cove former profile, radius 25mm, height 10 cm, depth 2mm.</li></ul> <p>Ceiling:</p> <ul style="list-style-type: none"><li>- Ecological wall panels (PUR) minimum 60mm, which save heat, sound isolation included, covered with exterior and interior facade. Interior depth of plasticized stake, minimum 0,4mm exterior minimum 0,4mm, polyurethane</li></ul> | 1 |



Република Северна Македонија

**Министерство за труд  
и социјална политика**

|    |  |   |
|----|--|---|
|    | <p>weight, minimum 42 kg/m<sup>3</sup>, thermal conductivity, maximum 0,43 U(W/m<sup>2</sup>K) RAL 9002/9002.</p> <p>Carpentry:</p> <ul style="list-style-type: none"><li>- PVC – single-leaf double hung window, with insulated glass, dimensions 80/100 cm and parapet at height of 90cm, , exterior mosquito net. The number of elements and their positioning should be in accordance with the drawings attached herein.</li><li>- PVC – single-leaf interior door – 120/210cm filled panel, set with: shackle, door knob, lock and floor border and rooms numbering, dimensions 12/24 cm. The number of elements and their positioning should be in accordance with the drawings attached herein.</li></ul> <p>Cooling and heating system:</p> <ul style="list-style-type: none"><li>- Air conditioning inverter system – minimum 3,5 KW.</li></ul> <p>Installations:</p> <p>Electrical installation:</p> <ul style="list-style-type: none"><li>- 3 LED lights x 18w (internal);</li><li>- 4 alternating electrical switches;</li><li>- Minimum 3 single-phase upgraded power outlet;</li><li>- single-phase upgraded power outlet – air conditioner; The number of elements and their positioning should be in accordance with the drawings attached herein.</li><li>- 1 PVC wall switchboard with minimum 3 automatic fuses;</li><li>- 1 Input IP board;</li></ul>              |   |
| 8. | <p><b>Type 8 – Construction, transport and montage of modular prefabricated containers – (hospital inpatient room for patients with mild clinical condition) – “turn key” project; dimensions: 7200 mm length 6000 mm width and 2600 mm height (external dimension) or „equivalent “.</b></p> <p><b>The containers shall have the following equipment:</b></p> <ul style="list-style-type: none"><li>- <b>Structural steel dimensioning according to static calculation;</b></li><li>- <b>Anticorrosive iron steel, epoxy coated with 4 layers of paint, constructive S 235JR or „equivalent “, conformed to MKC EN10025-2:2009;</b><ul style="list-style-type: none"><li>- <b>Steel construction depth, minimum 3mm;</b></li></ul></li></ul> <p><b>Fabricated of:</b></p> <ul style="list-style-type: none"><li>- <b>Ecological wall panels (PUR) minimum 60mm, which save heat, sound isolation included, covered with exterior and interior facade. Interior depth of plasticized stake, minimum 0,4mm, exterior minimum 0,4mm, polyurethane weight, minimum 42 kg/m<sup>3</sup>, thermal conductivity, maximum: 0,43 U(W/m<sup>2</sup>K) RAL 9002/9002;</b></li></ul> <p><b>Floor:</b></p> <ul style="list-style-type: none"><li>- <b>Cement table 10mm with amortization, connecting the steel beam</b></li><li>- <b>Thermal isolation 10 cm, extruded polystyrene;</b></li></ul> | 3 |



Република Северна Македонија

**Министерство за труд  
и социјална политика**

- Steel beam dimensions: 100 mm x 40 mm x 3 mm; 100 mm x 20 mm x 3 mm; 80 mm x 50 mm x 3 mm; 50 mm-40 mm-3mm, structural steel dimensioning according to static calculation

- Cement table 20mm

- OSB boards;

- Homogeneous Vinyl PVC Flooring, minimum 2mm, strengthened with pure protection, exploited class 34/43, min. 3000gr/m<sup>2</sup>, abrasive group 4.00mm<sup>3</sup>, suitable for wheelchairs, fire resistant, electrostatic, antibacterial, chemicals and sliding conformed to: EN13501, ISO26987-EN423, ISO846. Glued and welded with electrodes, cove former profile, radius 25mm, height 10 cm, depth 2mm.

Ceiling:

- Ecological wall panels (PUR) minimum 60mm, which save heat, sound isolation included, covered with exterior and interior facade. Interior depth of plasticized stake, minimum 0,4mm exterior minimum 0,4mm, polyurethane weight, minimum 42 kg/m<sup>3</sup>, thermal conductivity, maximum 0,43 U(W/m<sup>2</sup>K) RAL 9002/9002.

Carpentry:

- PVC – single-leaf double hung window, with insulated glass, dimensions 80/100 cm and parapet at height of 90cm, mating 50% of glass surface with foil, and exterior mosquito net. The number of elements and their positioning should be in accordance with the drawings attached herein.

- PVC – single-leaf interior door – 120/210cm filled panel, set with: shackle, door knob, lock and floor border and rooms numbering, dimensions 12/24 cm. The number of elements and their positioning should be in accordance with the drawings attached herein.

Cooling and heating system:

- Air conditioning inverter system – minimum 3,5 KW. The number of elements and their positioning should be in accordance with the drawings attached herein.

Installations:

Electrical installation:

- 9 LED lights x 18w;

- Electrical switch;

- single-phase upgraded power outlet;

- single-phase upgraded power outlet – cooling and heating system; The number of elements and their positioning should be in accordance with the drawings attached herein.

- PVC wall switchboard with automatic fuses;

- 1 Input IP board;



Република Северна Македонија

Министерство за труд  
и социјална политика

|    |   |   |
|----|---|---|
| 9. | <p><b>Type 9 – Construction, transport and montage of modular prefabricated containers – (hospital inpatient room for patients with severe clinical condition ) – “turn key” project; dimensions: 9600 mm length, 6000 mm width and 2600 mm height (external dimension) or „equivalent “.</b></p> <p><b>The containers shall have the following equipment:</b></p> <ul style="list-style-type: none"><li>- <b>Structural steel dimensioning according to static calculation;</b></li><li>- <b>Anticorrosive iron steel, epoxy coated with 4 layers of paint, constructive S 235JR or „equivalent “, conformed to MKC EN10025-2:2009;</b><ul style="list-style-type: none"><li>- <b>Steel construction depth, minimum 3mm;</b></li></ul></li></ul> <p><b>Fabricated of:</b></p> <ul style="list-style-type: none"><li>- <b>Ecological wall panels (PUR) minimum 60mm, which save heat, sound isolation included, covered with exterior and interior facade. Interior depth of plasticized stake, minimum 0,4mm, exterior minimum 0,4mm, polyurethane weight, minimum 42 kg/m<sup>3</sup>, thermal conductivity, maximum: 0,43 U(W/m<sup>2</sup>K) RAL 9002/9002;</b></li></ul> <p><b>Floor:</b></p> <ul style="list-style-type: none"><li>- <b>Cement table 10mm with amortization, connecting the steel beam</b></li><li>- <b>Thermal isolation 10 cm, extruded polystyrene;</b></li><li>- <b>Steel beam dimensions: 100 mm x 40 mm x 3 mm; 100 mm x 20 mm x 3 mm; 80 mm x 50 mm x 3 mm; 50 mm-4 0mm-3mm, structural steel dimensioning according to static calculation</b></li><li>- <b>Cement table 20mm</b></li><li>- <b>OSB boards;</b></li><li>- <b>Homogeneous Vinyl PVC Flooring, minimum 2mm, strengthened with pur xr protection, exploited class 34/43, min. 3000gr/m<sup>2</sup>, abrasive group 4.00mm<sup>3</sup>, suitable for wheelchairs, fire resistant, electrostatic, antibacterial, chemicals and sliding conformed to: EN13501, ISO26987-EN423, ISO846. Glued and welded with electrodes, cove former profile, radius 25mm, height 10 cm, depth 2mm.</b></li></ul> <p><b>Ceiling:</b></p> <ul style="list-style-type: none"><li>- <b>Ecological wall panels (PUR) minimum 60mm, which save heat, sound isolation included, covered with exterior and interior facade. Interior depth of plasticized stake, minimum 0,4mm exterior minimum 0,4mm, polyurethane weight, minimum 42 kg/m<sup>3</sup>, thermal conductivity, maximum 0,43 U(W/m<sup>2</sup>K) RAL 9002/9002.</b></li></ul> <p><b>Carpentry:</b></p> <ul style="list-style-type: none"><li>- <b>PVC – single-leaf double hung window, with insulated glass, dimensions 80/100 cm and parapet at height of 90cm, mating 50% of glass surface with foil, and exterior mosquito net. The number of elements and their positioning should be in accordance with the drawings attached herein.</b></li></ul> | 2 |
|----|---|---|



Република Северна Македонија

**Министерство за труд  
и социјална политика**

|     |   |   |
|-----|---|---|
|     | <p>- PVC – single-leaf interior door – 120/210cm filled panel, set with: shackle, door knob, lock and floor border and rooms numbering, dimensions 12/24 cm. The number of elements and their positioning should be in accordance with the drawings attached herein.</p> <p>Cooling and heating system:</p> <ul style="list-style-type: none"><li>- Air conditioning inverter system – minimum 3,5 KW. The number of elements and their positioning should be in accordance with the drawings attached herein.</li></ul> <p>Installations:</p> <p>Electrical installation:</p> <ul style="list-style-type: none"><li>- 12 LED lights x 18w;</li><li>- Electrical switch;</li><li>- single-phase upgraded power outlet;</li><li>- single-phase upgraded power outlet – cooling and heating system; The number of elements and their positioning should be in accordance with the drawings attached herein.</li><li>- PVC wall switchboard with automatic fuses;</li><li>- 1 Input IP board.</li></ul>  |   |
| 10. | <p><b>Type 10 – Construction, transport and montage of modular prefabricated containers – (men/women toilets with 3 sinks, 2 toilet bowls, cabinet for persons with disabilities) – “turn key” project; dimensions: 2400 mm length, 6000 mm width and 2600 mm height (external dimension) or „equivalent “.</b></p> <p><b>The containers shall have the following equipment:</b></p> <ul style="list-style-type: none"><li>- <b>Structural steel dimensioning according to static calculation;</b></li><li>- <b>Anticorrosive iron steel, epoxy coated with 4 layers of paint, constructive S 235JR or „equivalent “, conformed to MKC EN10025-2:2009;</b><ul style="list-style-type: none"><li>- <b>Steel construction depth, minimum 3mm;</b></li></ul></li></ul> <p><b>Fabricated of:</b></p> <ul style="list-style-type: none"><li>- <b>Ecological wall panels (PUR) minimum 60mm, which save heat, sound isolation included, covered with exterior and interior facade. Interior depth of plasticized stake, minimum 0,4mm, exterior minimum 0,4mm, polyurethane weight, minimum 42 kg/m<sup>3</sup>, thermal conductivity, maximum: 0,43 U(W/m<sup>2</sup>K) RAL 9002/9002;</b></li></ul> <p><b>Floor:</b></p> <ul style="list-style-type: none"><li>- Cement table 10mm with amortization, connecting the steel beam</li><li>- Thermal isolation 10 cm, extruded polystyrene;</li><li>- Steel beam dimensions: 100 mm x 40 mm x 3 mm; 100 mm x 20 mm x 3 mm; 80 mm x 50 mm x 3 mm; 50 mm-40mm-3mm, structural steel dimensioning according to static calculation</li><li>- Cement table 20mm</li><li>- OSB boards;</li></ul> | 2 |



Република Северна Македонија

**Министерство за труд  
и социјална политика**

|     |  |  |
|-----|--|--|
|     | <ul style="list-style-type: none"><li>- Homogeneous Vinyl PVC Flooring, minimum 2mm, strengthened with pur xr protection, exploited class 34/43, min. 3000gr/m<sup>2</sup>, abrasive group 4.00mm<sup>3</sup>, suitable for wheelchairs, fire resistant, electrostatic, antibacterial, chemicals and sliding conformed to: EN13501, ISO26987-EN423, ISO846. Glued and welded with electrodes, cove former profile, radius 25mm, height 10 cm, depth 2mm.</li></ul> <p>Ceiling:</p> <ul style="list-style-type: none"><li>- Ecological wall panels (PUR) minimum 60mm, which save heat, sound isolation included, covered with exterior and interior facade. Interior depth of plasticized stake, minimum 0,4mm exterior minimum 0,4mm, polyurethane weight, minimum 42 kg/m<sup>3</sup>, thermal conductivity, maximum 0,43 U(W/m<sup>2</sup>K) RAL 9002/9002.</li></ul> <p>Carpentry:</p> <ul style="list-style-type: none"><li>- PVC – single-leaf double hung window, with insulated glass, dimensions 60/60 cm and parapet at height of 150cm. The number of elements and their positioning should be in accordance with the drawings attached herein.</li><li>- PVC – single-leaf interior door – 120/210cm with 50 % filled panel and 50% mating glass 4x16x4 set with: shackle, door knob, lock and floor border and rooms numbering, dimensions 12/24 cm. The number of elements and their positioning should be in accordance with the drawings attached herein.</li></ul> <p>Cooling and heating system:</p> <ul style="list-style-type: none"><li>- Heating type – electrical panels</li></ul> <p>Installations:</p> <p>Water supply and sanitation:</p> <ul style="list-style-type: none"><li>- The number of elements and their positioning should be in accordance with the drawings attached herein. (ex. Single battery tap, toilet bowl with flash, 50 liter hot water boiler etc.)</li></ul> <p>Electrical installation:</p> <ul style="list-style-type: none"><li>- 3 LED lights x 18w;</li><li>- Electrical switch;</li><li>- single-phase upgraded power outlet;</li><li>- single-phase upgraded power outlet – air conditioner; The number of elements and their positioning should be in accordance with the drawings attached herein.</li><li>- PVC wall switchboard with minimum 6 automatic fuses;</li><li>- 1 Input IP board.</li></ul> |  |
| 11. | <p><b>Type 11 – Construction, transport and montage of modular prefabricated containers (hallway – stationary department) – “turn key” project; dimensions: length according to the disposition of the drawings with 2400 mm width and height 2600 mm (external dimension) or „equivalent “.</b></p> <p><b>The containers shall have the following equipment:</b></p> <ul style="list-style-type: none"><li>- <b>Structural steel dimensioning according to static calculation;</b></li><li>- <b>Anticorrosive iron steel, epoxy coated with 4 layers of paint, constructive S 235JR or „equivalent “, conformed to MKC EN10025-2:2009;</b></li></ul>  | <p><b>1 (app. 12m)</b><br/>24m<br/>APPROX.</p> |



Република Северна Македонија

Министерство за труд  
и социјална политика

|   |
|---|
| <p>- <b>Steel construction depth, minimum 3mm;</b><br/><b>Fabricated of:</b></p> <ul style="list-style-type: none"><li>- <b>Ecological wall panels (PUR) minimum 60mm, which save heat, sound isolation included, covered with exterior and interior facade. Interior depth of plasticized stake, minimum 0,4mm, exterior minimum 0,4mm, polyurethane weight, minimum 42 kg/m3, thermal conductivity, maximum: 0,43 U(W/m2K) RAL 9002/9002;</b></li></ul> <p style="text-align: center;"><b>Floor:</b></p> <ul style="list-style-type: none"><li>- <b>Cement table 10mm with amortization, connecting the steel beam</b><ul style="list-style-type: none"><li>- <b>Thermal isolation 10 cm, extruded polystyrene;</b></li></ul></li><li>- <b>Steel beam dimensions: 100 mm x 40 mm x 3 mm; 100 mm x 20 mm x 3 mm; 80 mm x 50 mm x 3 mm; 50 mm-4 0mm-3mm, structural steel dimensioning according to static calculation</b><ul style="list-style-type: none"><li>- <b>Cement table 20mm</b></li><li>- <b>OSB boards;</b></li></ul></li><li>- <b>Homogeneous Vinyl PVC Flooring, minimum 2mm, strengthened with pur xr protection, exploited class 34/43, min. 3000gr/m2, abrasive group 4.00mm3, suitable for wheelchairs, fire resistant, electrostatic, antibacterial, chemicals and sliding conformed to: EN13501, ISO26987-EN423, ISO846. Glued and welded with electrodes, cove former profile, radius 25mm, height 10 cm, depth 2mm.</b></li></ul> <p style="text-align: center;"><b>Ceiling:</b></p> <ul style="list-style-type: none"><li>- <b>Ecological wall panels (PUR) minimum 60mm, which save heat, sound isolation included, covered with exterior and interior facade. Interior depth of plasticized stake, minimum 0,4mm exterior minimum 0,4mm, polyurethane weight, minimum 42 kg/m3, thermal conductivity, maximum 0,43 U(W/m2K) RAL 9002/9002.</b></li></ul> <p style="text-align: center;"><b>Carpentry:</b></p> <ul style="list-style-type: none"><li>- <b>PVC – double-leaf door – 180/210cm filled panel, set with: shackle, door knob, lock and floor border and rooms numbering, dimensions 12/24 cm. The number of elements and their positioning should be in accordance with the drawings attached herein.</b></li></ul> <p>Cooling and heating system:</p> <ul style="list-style-type: none"><li>- <b>Air conditioning inverter system – minimum 3,5 KW. The number of elements and their positioning should be in accordance with the drawings attached herein.</b></li></ul> <p>Installations:</p> <p>Electrical installation:</p> <ul style="list-style-type: none"><li>- <b>LED lights x 18w;</b></li><li>- <b>Electrical switch;</b></li><li>- <b>single-phase upgraded power outlet;</b></li><li>- <b>single-phase upgraded power outlet – cooling and heating system; The number of elements and their positioning should be in accordance with the drawings attached herein.</b></li></ul> |
|---|



Република Северна Македонија

Министерство за труд  
и социјална политика

|     |  |   |
|-----|--|---|
|     | <ul style="list-style-type: none"><li>- PVC wall switchboard with automatic fuses;</li><li>- 1 Input IP board.</li></ul>   |   |
| 12. | <p><b>Type 12 – Construction, transport and montage of modular prefabricated containers – ( hallway – clean department) –“turn key” project; dimensions: 2400 mm length, 6000 mm width and 2600 mm height (external dimension) or „equivalent “.</b></p> <p><b>The containers shall have the following equipment:</b></p> <ul style="list-style-type: none"><li>- <b>Structural steel dimensioning according to static calculation;</b></li><li>- <b>Anticorrosive iron steel, epoxy coated with 4 layers of paint, constructive S 235JR or „equivalent “, conformed to MKC EN10025-2:2009;</b><ul style="list-style-type: none"><li>- <b>Steel construction depth, minimum 3mm;</b></li></ul></li><li>- <b>Fabricated of:</b><ul style="list-style-type: none"><li>- <b>Ecological wall panels (PUR) minimum 60mm, which save heat, sound isolation included, covered with exterior and interior facade. Interior depth of plasticized stake, minimum 0,4mm, exterior minimum 0,4mm, polyurethane weight, minimum 42 kg/m<sup>3</sup>, thermal conductivity, maximum: 0,43 U(W/m<sup>2</sup>K) RAL 9002/9002;</b></li></ul></li><li>- <b>Floor:</b><ul style="list-style-type: none"><li>- <b>Cement table 10mm with amortization, connecting the steel beam</b><ul style="list-style-type: none"><li>- <b>Thermal isolation 10 cm, extruded polystyrene;</b></li></ul></li><li>- <b>Steel beam dimensions: 100 mm x 40 mm x 3 mm; 100 mm x 20 mm x 3 mm; 80 mm x 50 mm x 3 mm; 50 mm-4 0mm-3mm, structural steel dimensioning according to static calculation</b><ul style="list-style-type: none"><li>- <b>Cement table 20mm</b></li><li>- <b>OSB boards;</b></li></ul></li></ul></li><li>- <b>Homogeneous Vinyl PVC Flooring, minimum 2mm, strengthened with pur xr protection, exploited class 34/43, min. 3000gr/m<sup>2</sup>, abrasive group 4.00mm<sup>3</sup>, suitable for wheelchairs, fire resistant, electrostatic, antibacterial, chemicals and sliding conformed to: EN13501, ISO26987-EN423, ISO846. Glued and welded with electrodes, cove former profile, radius 25mm, height 10 cm, depth 2mm.</b><ul style="list-style-type: none"><li>- <b>Ceiling:</b><ul style="list-style-type: none"><li>- <b>Ecological wall panels (PUR) minimum 60mm, which save heat, sound isolation included, covered with exterior and interior facade. Interior depth of plasticized stake, minimum 0,4mm exterior minimum 0,4mm, polyurethane weight, minimum 42 kg/m<sup>3</sup>, thermal conductivity, maximum 0,43 U(W/m<sup>2</sup>K) RAL 9002/9002.</b></li></ul></li></ul></li><li>- <b>Carpentry:</b><ul style="list-style-type: none"><li>- <b>PVC – double-leaf door – 180/210cm filled panel, set with: shackle, door knob, lock and floor border and rooms numbering, dimensions 12/24 cm. The number of elements and their positioning should be in accordance with the drawings attached herein.</b></li></ul></li></ul> <p><b>Cooling and heating system:</b></p> | 1 |





Република Северна Македонија

Министерство за труд  
и социјална политика

|     |   |   |
|-----|---|---|
|     | <ul style="list-style-type: none"><li>- <b>Air conditioning inverter system – minimum 3,5 KW. The number of elements and their positioning should be in accordance with the drawings attached herein.</b><br/><b>Installations:</b><br/><b>Electrical installation:</b><ul style="list-style-type: none"><li>- <b>3 LED lights x 18w;</b></li><li>- <b>Electrical switch;</b></li><li>- <b>single-phase upgraded power outlet;</b></li></ul></li><li>- <b>single-phase upgraded power outlet – cooling and heating system; The number of elements and their positioning should be in accordance with the drawings attached herein.</b><ul style="list-style-type: none"><li>- <b>PVC wall switchboard with automatic fuses;</b></li><li>- <b>1 Input IP board.</b></li></ul></li></ul>  |   |
| 13. | <p><b>Type 13 – Construction, transport and montage of modular prefabricated containers – (hallway – triage department) – “turn key” project; dimensions: 12000 mm length, 2400 mm width and 2600 mm height (external dimension) or „equivalent “.</b></p> <p><b>The containers shall have the following equipment:</b></p> <ul style="list-style-type: none"><li>- <b>Structural steel dimensioning according to static calculation;</b></li><li>- <b>Anticorrosive iron steel, epoxy coated with 4 layers of paint, constructive S 235JR or „equivalent “, conformed to MKC EN10025-2:2009;</b><ul style="list-style-type: none"><li>- <b>Steel construction depth, minimum 3mm;</b></li></ul></li></ul> <p><b>Fabricated of:</b></p> <ul style="list-style-type: none"><li>- <b>Ecological wall panels (PUR) minimum 60mm, which save heat, sound isolation included, covered with exterior and interior facade. Interior depth of plasticized stake, minimum 0,4mm, exterior minimum 0,4mm, polyurethane weight, minimum 42 kg/m<sup>3</sup>, thermal conductivity, maximum: 0,43 U(W/m<sup>2</sup>K) RAL 9002/9002;</b></li></ul> <p><b>Floor:</b></p> <ul style="list-style-type: none"><li>- <b>Cement table 10mm with amortization, connecting the steel beam</b><ul style="list-style-type: none"><li>- <b>Thermal isolation 10 cm, extruded polystyrene;</b></li></ul></li><li>- <b>Steel beam dimensions: 100 mm x 40 mm x 3 mm; 100 mm x 20 mm x 3 mm; 80 mm x 50 mm x 3 mm; 50 mm-4 0mm-3mm, structural steel dimensioning according to static calculation</b><ul style="list-style-type: none"><li>- <b>Cement table 20mm</b></li><li>- <b>OSB boards;</b></li></ul></li><li>- <b>Homogeneous Vinyl PVC Flooring, minimum 2mm, strengthened with pur xr protection, exploited class 34/43, min. 3000gr/m<sup>2</sup>, abrasive group 4.00mm<sup>3</sup>, suitable for wheelchairs, fire resistant, electrostatic, antibacterial, chemicals and sliding conformed to: EN13501, ISO26987-EN423, ISO846. Glued and welded with electrodes, cove former profile, radius 25mm, height 10 cm, depth 2mm.</b></li></ul> <p><b>Ceiling:</b></p> <ul style="list-style-type: none"><li>- <b>Ecological wall panels (PUR) minimum 60mm, which save heat, sound isolation included, covered with exterior and interior facade. Interior depth of plasticized stake, minimum 0,4mm exterior minimum 0,4mm, polyurethane</b></li></ul> | 1 |



Република Северна Македонија

**Министерство за труд  
и социјална политика**

|     |  |  |
|-----|--|--|
|     | <p><b>weight, minimum 42 kg/m<sup>3</sup>, thermal conductivity, maximum 0,43 U(W/m<sup>2</sup>K)<br/>RAL 9002/9002.</b></p> <p><b>Carpentry:</b></p> <ul style="list-style-type: none"><li>- PVC – single-leaf interior door – 120/210cm filled panel, set with: shackle, door knob, lock and floor border and rooms numbering, dimensions 12/24 cm. The number of elements and their positioning should be in accordance with the drawings attached herein.</li></ul> <p>Cooling and heating system:</p> <ul style="list-style-type: none"><li>- Air conditioning inverter system – minimum 3,5 KW. The number of elements and their positioning should be in accordance with the drawings attached herein.</li></ul> <p>Installations:</p> <p>Electrical installation:</p> <ul style="list-style-type: none"><li>- 5 LED lights x 18w;</li><li>- Electrical switch;</li><li>- single-phase upgraded power outlet;</li><li>- single-phase upgraded power outlet – cooling and heating system; The number of elements and their positioning should be in accordance with the drawings attached herein.</li><li>- PVC wall switchboard with automatic fuses;</li><li>- 1 Input IP board.</li></ul> |  |
| 14. | <p><b>Gable (dual-pitched) roof construction and eaves – turn-key project, horizontal projection approximately in addition columns according to the types Construction, transport and montage of roof construction, fabricated of steel lattice structure (dimensioning according to static calculation), minimum slope 10%, steel-galvanized-plasticized sheet metal covering, d=0.5mm, with set of moldings and slat, positioned on steel sub-construction.</b></p> <p>The roof construction must include: full patching, horizontal and vertical gutters and lightning strikes protection.</p>  | <p><b>1 psc of<br/>452m<sup>2</sup><br/>approx.</b></p>  |
| 15  | <p>Preparation of construction site: removing (clearing), disposing, leveling and substrate (ground) preparation for montage of modular prefabricated containers.</p> <p>The position includes:</p> <ul style="list-style-type: none"><li>- Remove and dispose the vegetation to the landfill site. Establish and set out the facility pursuant the earthworks regulations approximately according to the drawings attached herein.</li><li>- Excavate 3rd (III) category land dispose approximately according to the drawings attached herein.</li><li>- Embankment and intersection of the ground.</li><li>- Procurement, transport and embankment of gravel under the ground slab (foundation), including: applying, planning and inserting with vibrations d.=10-20cm until minimum bearing capacity.</li><li>- Construction of reinforced concrete ground slab, d.= 20cm, approximately according to the drawings attached herein.</li></ul>  | <p><b>1 psc of<br/>548 m<sup>2</sup><br/>approx.</b></p> |



Република Северна Македонија

**Министерство за труд  
и социјална политика**

|   |  |
|---|--|
| - Insertion of water supply and sanitation plug to the facility<br>- Providing pedestrian access routes |  |
|---|--|

Комисијата не може да констатира за вградените елементи кои не се видливи дека се изведени согласно спецификацијата од договор, за што набавувачот (носител на набавката) гарантира со изјава за истото. Во прилог на изјавата ќе бидат доставени сертификати за квалитет на вградените материјали.

Присутните претставници констатираа дека позициите од Договорот се изведени во согласност со истиот за објектот-модуларни префабрикувани контејнери тип В, со што се смета дека објектот е уредно изведен.

Согласно Договорот за изведба на модуларни префабрикувани контејнери тип В за Регионални ковид центри, набавувачот му го предава објектот на купувачот Министерството за труд и социјална политика, а

Министерството за труд и социјална политика го предава на корисникот ЈЗУ Општа болница Струга, во целост согласно техничката спецификација погоре.

**Забелешки при технички прием:**

- Опш —
1. Објектот да се поврзе со ЕЛ ЕНЕРГИЈА
  2. Влез и излез на објект да се постави рамно од лиц за непрекнеан влез-излез
  3. Елект. кабли во лабораторија за шумо приклучници да се приклучат соодветно
  4. Да се постават фрначи во тоалети за лица со посебни потреби
  5. Да се потколнат (затворат) агли од тоалети за корисници (лица со посебни потреби)
  6. Да се санира одвод на влц шисола (тече/капе вода) во тоалет за корисници.
  7. Општина на канализацијата нека направи договор од објект.
  8. Чистење на објектот општо во внатрешноста на објектот.
  - 9.
  - 10.
  - 11.
  - 12.
  - 13.

-Митко Танески:

-Божин Ложанкоски:

-Зоран Апостолоски:

-Антонио Тргачевски:

-Претсавник од Брако: *Александар Наумов*

-Претставник на ЈЗУ Општа болница Струга:



До:

Министерство за Труд

и Социјална политика на

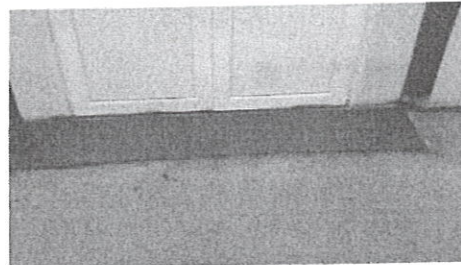
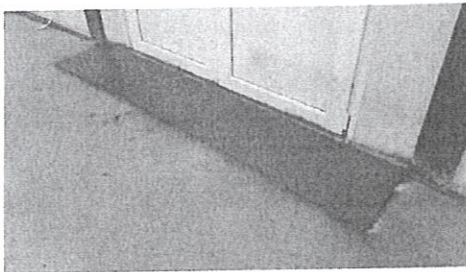
Република Северна Македонија

ДОГОВОР Бр. МК/ЕРСП # 1.1.7

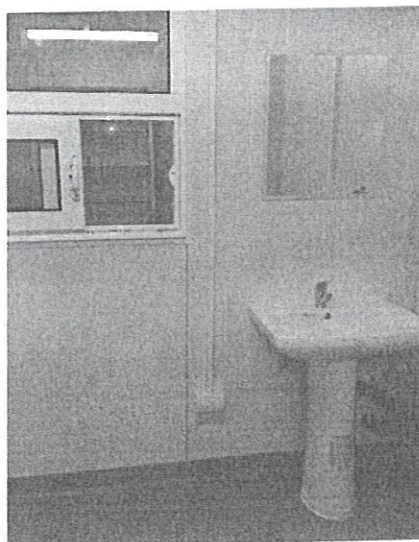
## ИЗЈАВА ЗА ЗАВРШЕНИ ПОПРВКИ ОД ЗАПИСНИК ЗА ПРИМОПРЕДАВАЊЕ НА МОДУЛАРНА БОЛИЦА СТРУГА

- Согласно забелешките во записникот од примопредавањето на модуларна болница, објект-модуларни префабрикувани контејнери ТИП В во Струга, Ве известуваме дека истите се уредно отстранети во зададените рокови, како што следи:

1. Објектот да се поврзе со електрична енергија.  
Оваа обврска е на корисникот на објектот.
2. На влез и излез на објектот да се постават рампи за непречен влез-излез

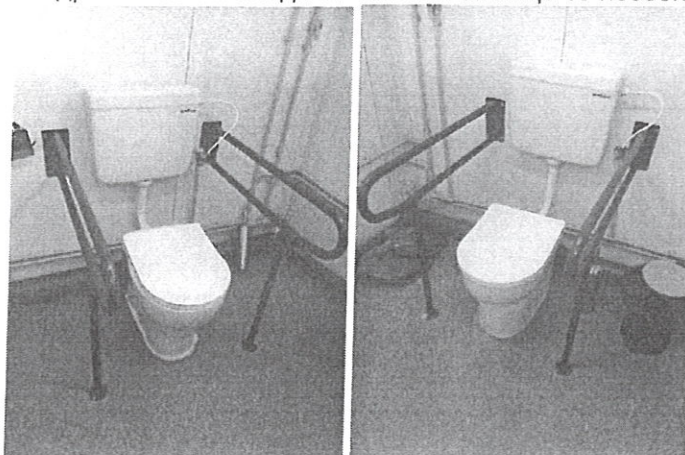


3. Електрични кабли во лабораторија за шуко приклучница да се прицврстат соодветно



*Анастас*

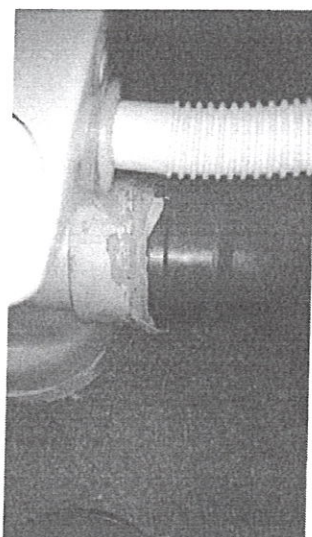
4. Да се постават држачи за инвалиди во тоалети за лица со посебни потреби



5. Да се потполнат (затворат) агли од тоалети за корисници (лица со посебни потреби)

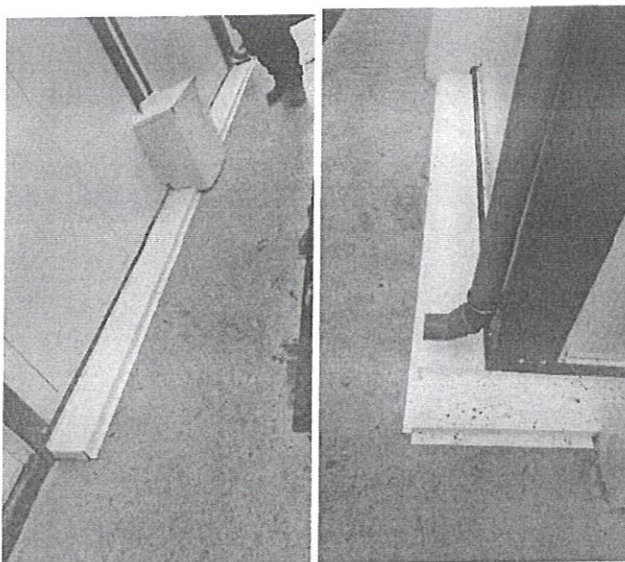


6. Да се санира одвод на WC školka (тече / капе вода) во тоалет за корисници



*Асирмет*

7. Опшивка на канализациона цевка надвор од објект.



8. Чистење на објектот општо во внатрешноста на објектот

Од страна на екипите кои ги извршуваа корекциите од записникот, направено е дополнително метење и бришење во внатрешноста на објектот.

Изработил:  
Александар Наумов









Република Северна Македонија  
Министерство за труд и  
социјална политика  
Бр. 10-4445/2  
22-06-2021  
Скопје

Врз основа на член 49 став 1 и член 55, став 1, од Законот за организација и работа на органите на државната управа (Службен весник на РМ бр.58/2000, 44/2002, 82/2008 167/2010, 51/2011 и Службен весник на РСМ бр 96/19,110/19 и 154/19),министерот за труд и социјална политика донесе:

### РЕШЕНИЕ ЗА ПРЕНЕСУВАЊЕ НА ВРЕДНОСТ

1. За потребите на Општата болница Струга направена е набавка, изградба, транспорт и монтажа на модуларни контејнери во функција на лабораториски и стационарни центари за итно справување со КОВИД кризата. Набавката е во износ од 12.828.314,00 МКД со вклучен ДДВ.
2. Се задолжува Општата болница Струга во книгата на пописот да ја внесе набавката во вредност од 12.828.314,00 МКД со вклучен ДДВ, и истата сметководствено да ја евидентира.
3. Опис на опремата:

| рб. | назив   | количина | ЕМ  | цена без<br>ДДВ | ДДВ<br>18% | ДДВ        | износ      |
|-----|---|----------|-----|-----------------|------------|------------|------------|
| 1   | Производство,транспорт и монтажа на модуларен префабрикован контејнер Тип 1 | 1        | ПАР | 439.995,60      | 18         | 79.199,21  | 439.995,60 |
| 2   | Производство,транспорт и монтажа на модуларен префабрикован контејнер Тип 2 | 1        | ПАР | 219.997,80      | 18         | 39.599,60  | 219.997,80 |
| 3   | Производство,транспорт и монтажа на модуларен префабрикован контејнер Тип 3 | 1        | ПАР | 691.132,70      | 18         | 124.403,89 | 691.132,70 |
| 4   | Производство,транспорт и монтажа на модуларен префабрикован контејнер Тип 4 | 2        | ПАР | 251.137,10      | 18         | 90.409,36  | 502.274,20 |
| 5   | Производство,транспорт и монтажа на модуларен префабрикован контејнер Тип 5 | 1        | ПАР | 439.995,60      | 18         | 79.199,21  | 439.995,60 |



|    |  |       |     |            |    |                 |                      |
|----|--|-------|-----|------------|----|-----------------|----------------------|
| 6  | Производство, транспорт и монтажа на модулари префабрикован контејнер Тип 6  | 1     | ПАР | 879.991,20 | 18 | 158.398,42      | 879.991,20           |
| 7  | Производство, транспорт и монтажа на модулари префабрикован контејнер Тип 13 | 1     | ПАР | 439.995,60 | 18 | 79.199,21       | 439.995,60           |
| 8  | Кровна конструкција за контејнери 14   | 647   | м2  | 1.105,47   | 18 | 128.743,04      | 715.239,09           |
| 9  | Производство, транспорт и монтажа на модулари префабрикован контејнер Тип 7  | 1     | ПАР | 219.997,80 | 18 | 39.599,60       | 219.997,80           |
| 10 | Производство, транспорт и монтажа на модулари префабрикован контејнер Тип 8  | 3     | ПАР | 659.993,40 | 18 | 356.396,44      | 1.979.980,20         |
| 11 | Производство, транспорт и монтажа на модулари префабрикован контејнер Тип 9  | 2     | ПАР | 879.991,20 | 18 | 316.796,83      | 1.759.982,40         |
| 12 | Производство, транспорт и монтажа на модулари префабрикован контејнер Тип 10 | 2     | ПАР | 251.137,10 | 18 | 90.409,36       | 502.274,20           |
| 13 | Производство, транспорт и монтажа на модулари префабрикован контејнер Тип 11 | 1     | ПАР | 877.372,20 | 18 | 157.927,00      | 877.372,20           |
| 14 | Производство, транспорт и монтажа на модулари префабрикован контејнер Тип 12 | 1     | ПАР | 219.997,80 | 18 | 39.599,60       | 219.997,80           |
| 15 | Подготовка на терен позиција 15  | 374,5 | м2  | 2.625,44   | 18 | 176.980,91      | 983.227,28           |
|    |  |       |     |            |    | <b>Основица</b> | <b>10.871.453,67</b> |
|    |  |       |     |            |    | <b>ДДВ</b>      | <b>1.956.861,66</b>  |
|    |  |       |     |            |    | <b>Вкупно</b>   | <b>12.828.314,00</b> |

4. Составен дел на ова Решение за направената набавка е, копија од Фактура број 21-390-000076 од 26.02.2021 година, Договор број МК/ЕРСР#1.1.7 склучен на 30.11.2020, сертификат за гаранција и записник за примопредавање. Ова Решение влегува во сила со денот на донесувањето



## Образложение

Во рамките на Министерството за труд и социјална политика, формирана е Единица за управување со Проектот за итно справување со КОВИД 19 кризата финансиран од средства на Заем одобрен од Светска Банка, број 9109.

Согласно Планот за набавки на Проектот за итно справување со КОВИД 19 кризата, кој е интегрален дел на Договорот за заем број- 9109, склучен помеѓу Република Македонија и Светска Банка, направена е набавка, изградба, транспорт и монтажа на модулари контејнери во функција на лабораториски и стационарни центри за итно справување со КОВИД 19 кризата во вкупен износ од 248.077.490,00 со вклучен ДДВ, согласно Договор број МК/ЕРСП#1.1.7 склучен на 30.11.2020 година, помеѓу Министерството за труд и социјална политика и фирмата "БРАКО ДОО „увоз-извоз Скопје.

Вкупната вредност на набавката согласно Договорот е исплатена од сметката на Министерството за труд и социјална политика, отворена за потребите на Проектот за итно справување со КОВИД 19 кризата, Раздел 15001, сметка 78670, програма П1, расходна поставка 481920.

Министер за труд  
и социјална политика

Јагода Шахпаска

Изготвил: Кристина Стојановска

Контролирал: Оливера Крстеска *oc*

Одобрил: Елизабета Куновска *ec*

